



## Compact Structure Boiler Soot Blower Short Retractable Sootblower Manual Operation

Our Product Introduction

for more products please visit us on [powerplantmachine.com](http://powerplantmachine.com)

### Basic Information

- Place of Origin: China
- Brand Name: HYZONT
- Certification: CCC
- Model Number: LMD-V92/V04
- Minimum Order Quantity: 1set
- Price: negotiated sale
- Packaging Details: wooden case
- Delivery Time: 15 Days after Payment
- Payment Terms: L/C, D/A, D/P, T/T
- Supply Ability: 500pcs a year



### Product Specification

- Highlight: Short Retractable Sootblower,  
Compact Retractable Sootblower,  
Compact Boiler Soot Blower



### More Images



## Product Description

### Short retractable soot blower

Short retractable soot blower are normally installed in the negative pressure area of the boiler, in this case there would be enough air absorbed into the boiler, and make good sealing effect of the wall box and soot blower collector.

#### Product Details

LMD-V92/V04 Short Retractable Furnace Soot blower:

Soot blowing medium	Steam
Application field	Furnace water wall field
Maximum steam temperature	500°C
Steam consumption	60-110kg/min
Blowing time	11-60s
Blowing angle	30-360°
Effective blowing radius	3.5m
Recommended blowing pressure	0.8-1.5Mpa
Total weight	140kg/165kg
Valve body material	Cr - Mo steel
Nozzle material	Heat-resisting stainless steel
Companion flange	DN80 PN63 DIN2546 Standard

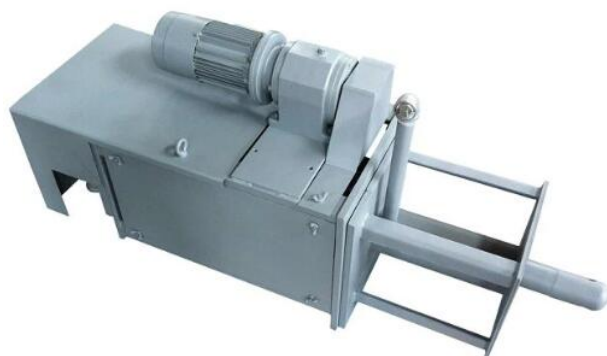
#### Description:

Short retractable soot blower LMD-V04/V92 are normally installed in the negative pressure area of the boiler, in this case there would be enough air absorbed into the boiler, and make good sealing effect of the wall box and soot blower collector. If with positive pressure boiler, it need to equip the special positive pressure wall box, we can provide both of them to meet your requirement.

LMD-V04 soot blower is used for power plant boiler ash blowing in the water wall field, which is the previous design of LMD-V92 soot blower, with smaller size. It's very convenient for plant side to install and maintain, no need the special suspension, and occupy less space.

#### Design Features:

1. Compact structure
2. Easy to maintain.
3. Manual operation
4. Perfect protection.



**Hyzont** Hyzont (Shanghai) Industrial Technologies Co.,Ltd..

+86-15021164313

raymond@hyzont.com

powerplantmachine.com

Room No.809-811 block No.1, Lane No.99 , Shenmei Road, Pudong New District, Shanghai, China.